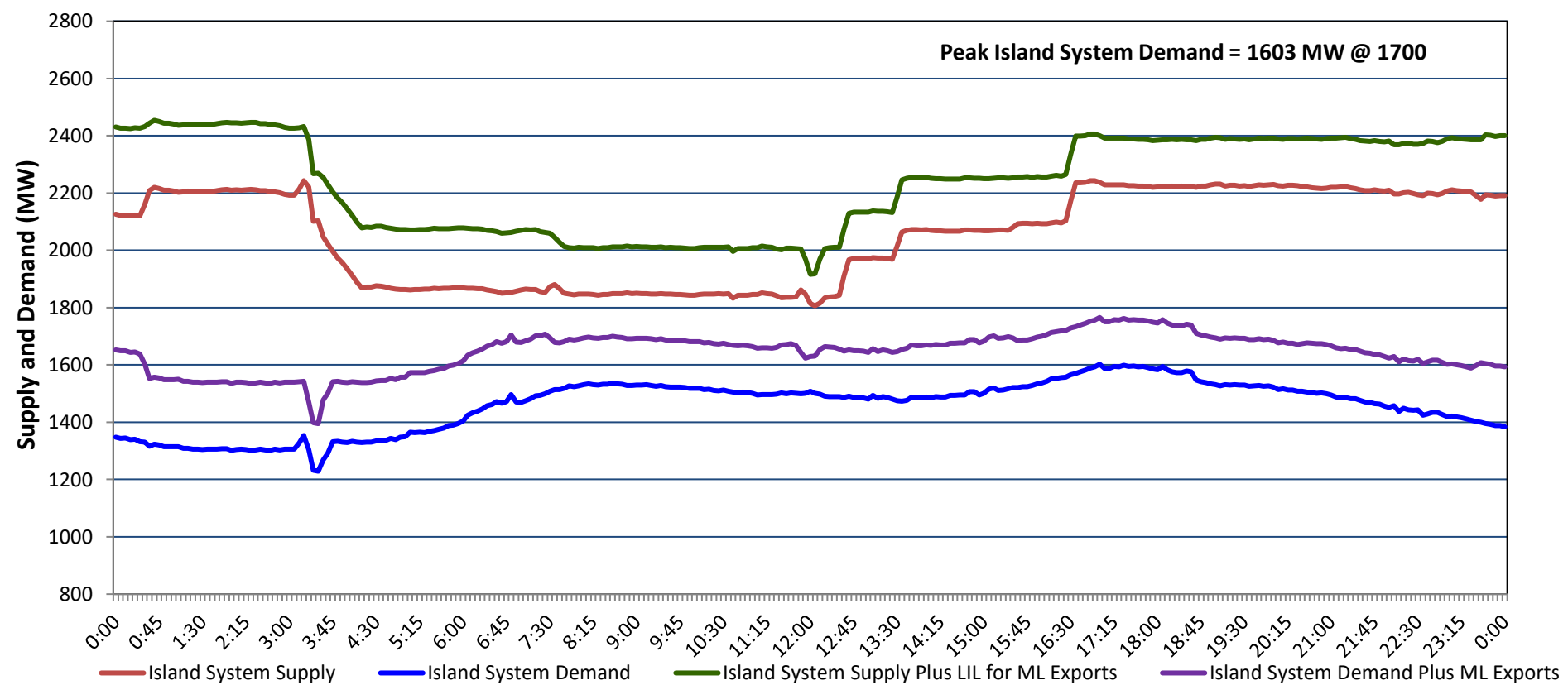


# Newfoundland Labrador Hydro (NLH) Supply and Demand Status Report Filed Thursday, January 23, 2025

## Section 1 Island Interconnected System - Supply, Demand & Exports Actual 24 Hour System Performance For Wednesday, January 22, 2025



### Island Supply Notes For January 22, 2025

- A** As of 0000 hours, October 20, 2024, Holyrood Unit 1 unavailable due to forced extension to planned outage (170 MW).  
**B** At 0318 hours, January 22, 2025, Labrador Island Link available at 450 MW due to forced outage (700 MW) - Monopole.  
**C** At 1203 hours, January 22, 2025, Labrador Island Link available at full capacity (700 MW) - Bipole.

## Section 2 Island Interconnected System - Supply, Demand & Outlook

Thu, Jan 23, 2025	Island System Outlook <sup>2</sup>	Seven-Day Forecast	Island System Daily Peak Demand (MW)	
			Forecast <sup>8</sup>	Adjusted <sup>6</sup>
Island System Supply: <sup>4</sup>	2,243 MW	Thursday, January 23, 2025	1,720	1,610
NLH Island Generation: <sup>3,7</sup>	1,525 MW	Friday, January 24, 2025	1,530	1,422
NLH Island Power Purchases: <sup>5</sup>	105 MW	Saturday, January 25, 2025	1,525	1,417
NP and CBPP Owned Generation:	210 MW	Sunday, January 26, 2025	1,435	1,328
LIL/ML Net Imports to Island: <sup>9</sup>	403 MW	Monday, January 27, 2025	1,445	1,338
		Tuesday, January 28, 2025	1,410	1,304
7-Day Island Peak Demand Forecast:	1,720 MW	Wednesday, January 29, 2025	1,375	1,269

### Island Supply Notes For January 23, 2025

- Notes:
1. Generation outages for running and corrective maintenance are included. These are not unusual for power system operations. They generally do not impact customer supply. Hydro schedules outages to system equipment whenever possible to coincide with periods when customer demands are low and sufficient supply reserves are available. However, from time to time equipment outages are necessary and reserves may be impacted.
  2. As of 0800 Hours.
  3. Gross continuous unit output.
  4. Gross output from all Island sources (including Note 3).
  5. NLH Island Power Purchases include: ML Imports, Exploits Generation, Rattle Brook, Star Lake, Wind Generation and capacity assistance (when applicable).
  6. Adjusted for interruptible load and the impact of voltage reduction when applicable.
  7. Due to limitations inherent in the design of combustion turbines, the output of combustion turbines may be reduced in the event that ambient temperatures exceed the threshold required for full rated output. This threshold is dependent on the design of each turbine.
  8. Does not include ML Exports.
  9. LIL Import sunk in the Island System. Actual LIL flows will be restricted by various system conditions including, but not limited to, Island Load, ML Exports and Avalon Unit status.

## Section 3 Island Peak Demand and Exports Information Previous Day Actual Peak and Current Day Forecast Peak

Wed, Jan 22, 2025	Island Peak Demand <sup>10</sup>	17:00	1,603 MW
	Exports at Peak		163 MW
	LIL Net Imports to Island		5,209 MWh
Thu, Jan 23, 2025	Forecast Island Peak Demand		1,720 MW

- Notes: 10. Island Demand is supplied by NLH generation and purchases, LIL Imports plus generation owned and operated by Newfoundland Power and Corner Brook Pulp & Paper (Deer Lake Power, DLP).